



PAILOT[®]

MOTORS

WE KEEP IN MOTION...



We believe that

Innovation is the driving force
behind progress.

Since 2011...

Pailot is a leading manufacturer of high-quality Pumps and Motors. With a legacy of excellence spanning over 14 years, we have established ourselves as a trusted name in the industry. Our commitment to innovation, precision engineering, and customer satisfaction has made us a preferred choice for businesses across various sectors.

14+

Years of Experience

35+

Employees

368+

Clients

Quality and Certifications

Pailot is committed to delivering motors of the highest quality. We adhere to international quality standards and hold certifications to demonstrate our commitment to excellence.

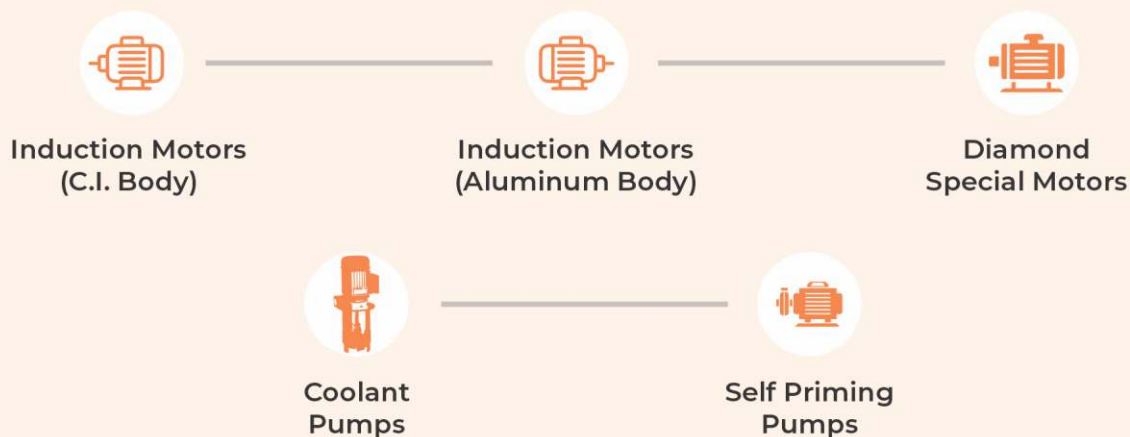
Vision

We believe that innovation is the driving force behind progress. We are dedicated to pushing the boundaries of what's possible, continually seeking new solutions, and embracing change with open arms.

Mission

Our mission is to design and produce the most efficient & reliable 1 Phase & 3 Phase Induction motors in the industry. We are dedicated to driving technological advancements, promoting sustainability & serving unique needs of clients.

Our Product Range



Industries We Served





3-Phase



INDUCTION MOTORS (C.I. Body)



1-Phase

3-Phase

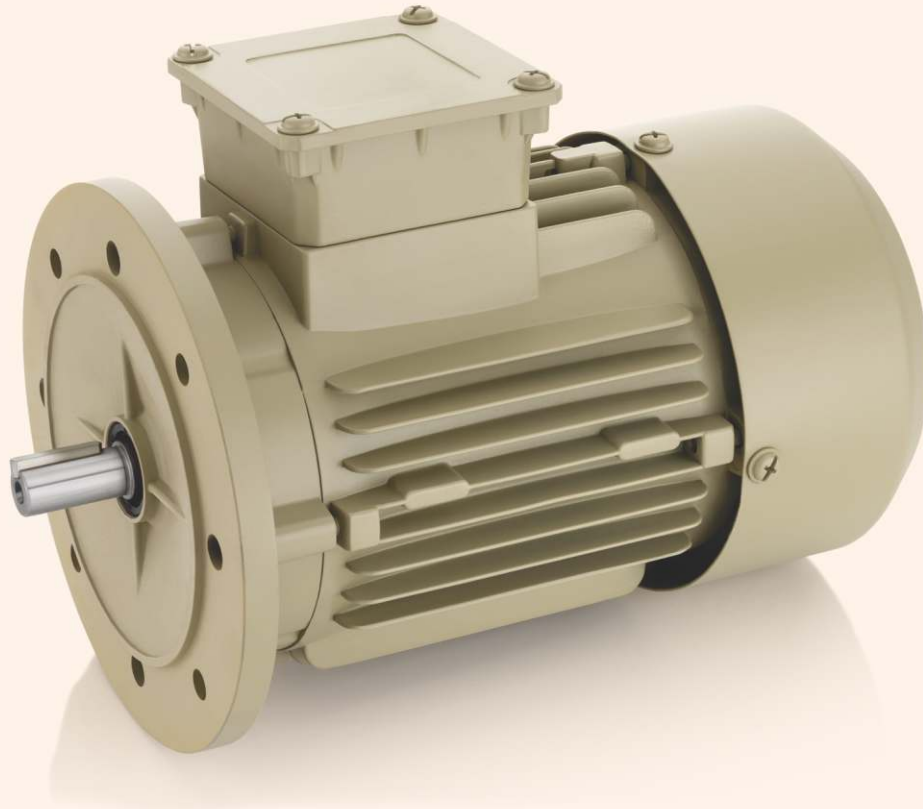
KW	HP	Frame	Full Load RPM	Current	Torque (%)	Starting Current(%)	Efficiency	Power Factor
0.37	0.5	71	1400	1.15	210	320	72.7	0.65
0.55	0.75	80	1410	1.35	205	420	77.1	0.74
0.75	1	80	1415	1.9	210	430	79.6	0.73
1.1	1.5	90S	1410	2.5	210	455	81.4	0.81
1.5	2	90L	1420	3.2	215	460	82.8	0.82
2.2	3	100L	1425	4.7	200	490	84.3	0.79
3.7	5	112M	1435	7.5	210	540	86.3	0.81
5.5	7.5	132S	1450	10.8	160	500	83.9	0.85
7.5	10	132M	1450	14.3	165	510	85.33	0.86

1-Phase

KW	HP	Frame	Full Load RPM	Current	Torque (%)	Starting Current(%)	Efficiency	Power Factor	Running Capacitor	Starting Capacitor
0.18	0.25	71	1450	2	270	475	63	0.8	15	-
0.37	0.5	80	1440	3.4	275	500	65	0.79	15	80-100
0.37	0.5	90S	1445	5	300	500	65	0.79	15	80-100
0.75	1	90S	1450	6.7	250	475	72	0.75	15	100-120
0.75	1	100L	1450	7	275	475	72	0.75	8	120-150
1.1	1.5	90L	1455	7.8	240	525	75	0.85	25	150-200
1.1	1.5	100M	1455	8	255	530	75	0.85	25	150-200
1.5	2	100L	1460	9.1	250	500	79	0.91	30	200-250
1.5	2	112M	1460	9.1	255	500	79	0.90	36	200-250
2.2	3	112M	1460	12.5	275	550	81	0.95	30+30	200-250

FEATURES

- CI Casting body.
- High starting torque.
- CRNO. electrical grade stator.
- Aluminum terminal box.
- High quality pre-packed shielded bearing.
- Motor shaft are made of EN8E steel.
- High quality copper with 'F' class insulation.



INDUCTION MOTORS (Aluminium Body)

KW	HP	Frame	Full Load RPM	Current	Torque (%)	Starting Current(%)	Efficiency	Power Factor
0.18	0.25	63	1365	0.8	220	280	55.7	0.64
0.37	0.5	71	1400	1.15	210	320	72.7	0.65
0.55	0.75	80	1410	1.35	205	420	77.1	0.74
0.75	1	80	1415	1.9	210	430	79.6	0.73
1.1	1.5	90S	1410	2.5	210	455	81.4	0.81
1.5	2	90L	1420	3.2	215	460	82.8	0.82
2.2	3	100L	1425	4.7	200	490	84.3	0.79

FEATURES

- Aluminum body for light weight.
- High starting torque.
- CRNO. electrical grade stator.
- Aluminum terminal box.
- High quality pre-packed shielded bearing.
- Motor shaft are made of EN8E steel.
- High quality copper with 'F' class insulation.



DIMOND SPECIAL MOTORS

3-Phase

KW	HP	Frame	Full Load RPM	Current	Torque (%)	Efficiency	Power Factor
0.18	0.25	71	2790	0.79	200	60.4	0.49
0.24	0.33	80	2815	0.84	210	64.8	0.54
0.37	0.5	80	2840	0.90	225	73.8	0.84

1-Phase

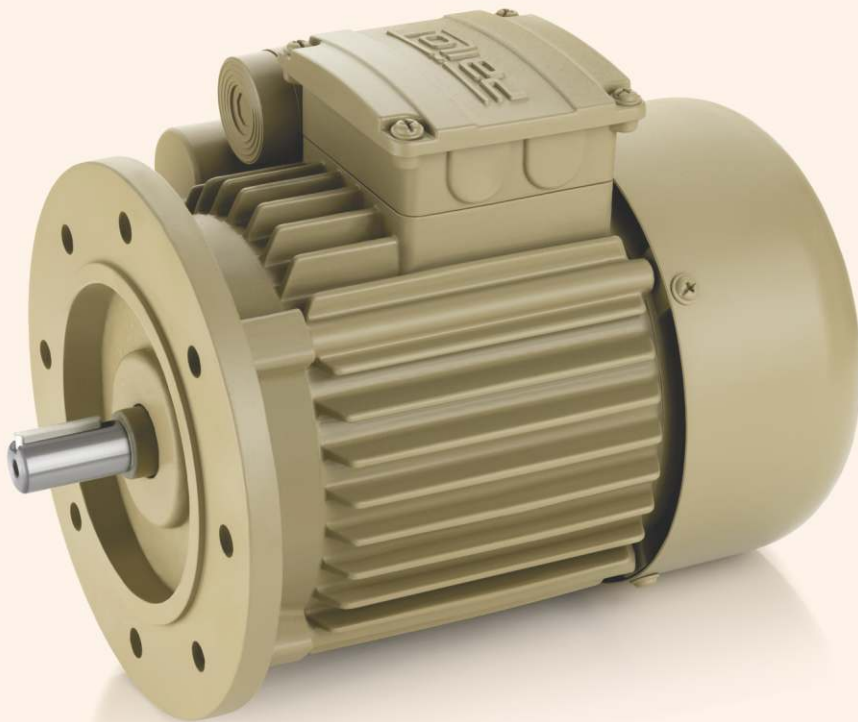
KW	HP	Frame	Full Load RPM	Current	Torque (%)	Efficiency	Power Factor	Running capacitor
0.18	0.25	71	2790	2.1	200	60.4	0.49	10
0.24	0.33	80	2815	2.6	210	64.8	0.54	12
0.37	0.5	80	2840	3.0	225	73.8	0.84	15



3-Phase



FLANGE MOTORS



1-Phase

3-Phase

KW	HP	Frame	Full Load RPM	Current	Torque (%)	Starting Current(%)	Efficiency	Power Factor
0.37	0.5	71	1400	1.15	210	320	72.7	0.65
0.55	0.75	80	1410	1.35	205	420	77.1	0.74
0.75	1	80	1415	1.9	210	430	79.6	0.73
1.1	1.5	90S	1410	2.5	210	455	81.4	0.81
1.5	2	90L	1420	3.2	215	460	82.8	0.82
2.2	3	100L	1425	4.7	200	490	84.3	0.79
3.7	5	112M	1435	7.5	210	540	86.3	0.81
5.5	7.5	132S	1450	10.8	160	500	83.9	0.85
7.5	10	132M	1450	14.3	165	510	85.33	0.86

The epitome of efficiency, reliability, and performance. Engineered to perfection, our motors are the driving force behind seamless operations in various industries.

1-Phase

KW	HP	Frame	Full Load RPM	Current	Torque (%)	Starting Current(%)	Efficiency	Power Factor	Running Capacitor	Starting Capacitor
0.18	0.25	71	1450	2	270	475	63	0.8	15	-
0.37	0.5	80	1440	3.4	275	500	65	0.79	15	80-100
0.75	1	90S	1450	6.7	250	475	72	0.75	15	100-120
1.1	1.5	90L	1455	7.8	240	525	75	0.85	25	150-200
1.5	2	100L	1460	9.1	250	500	79	0.91	30	200-250
2.2	3	112M	1460	12.5	275	550	81	0.95	30+30	200-250



COOLANT PUMPS

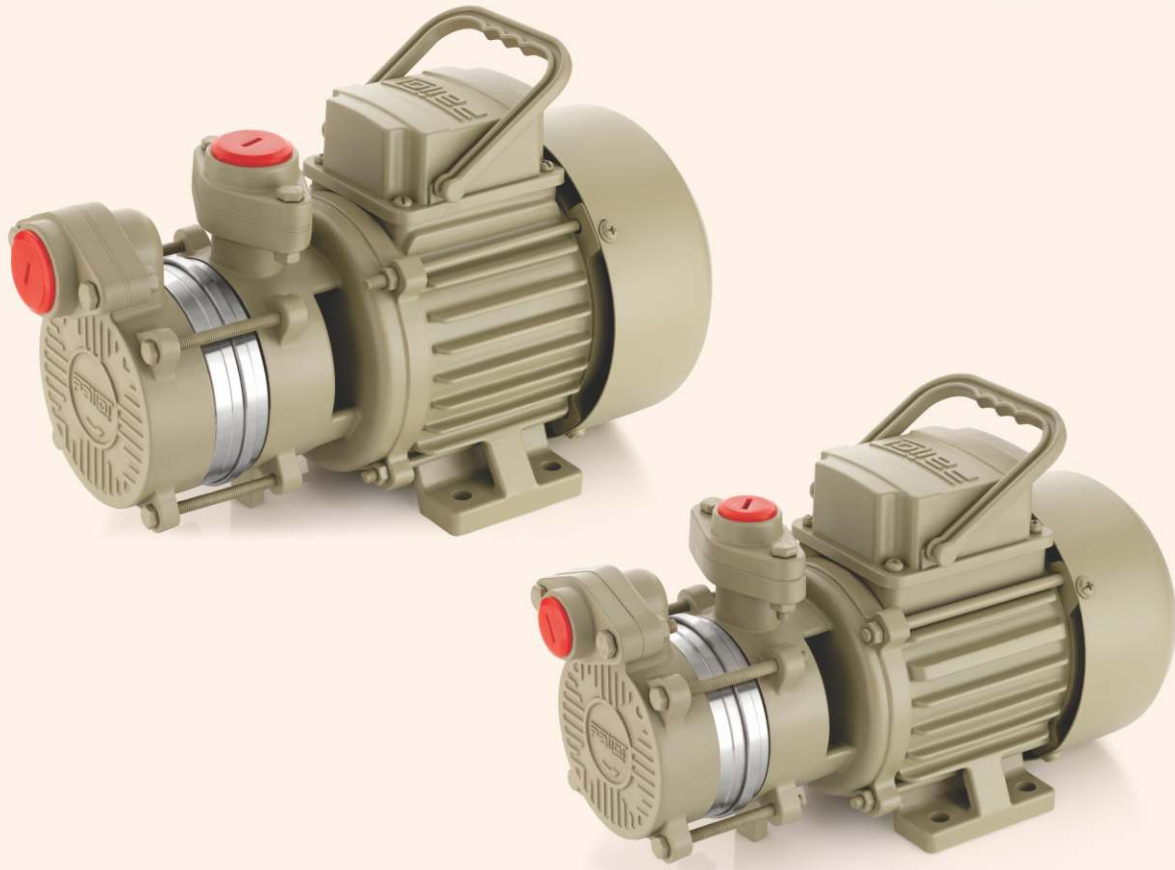
MODEL Name	POWER (kw)	POWER (hp)	HEAD RANGE (mtr)	DISCHARGE (lpm)	PIPE SIZE (inch)
PCP 15	0.1	0.15	4	50	1/2"
PCP25	0.18	0.25	6	80	3/4"

APPLICATION :

TYPES OF FLUIDS : · WATER · COOLING EMULSION · COOLING / CUTTING OIL

USED ON :

All CNC machines, Lathes and machining centers, Most suited for through tool cooling, deep hole drilling etc. also suitable for industrial washing



SELF PRIMING PUMPS

MODEL Name	POWER (kw)	POWER (hp)	PIPE SIZE (Inch)	HEAD RANGE (mtr)	DISCHARGE RANGE (LPH)
DELUX 50	0.37	0.5	1/2"X1/2"	30	725-1900
DELUX 75	0.55	0.75	1" X 1"	40	700-2450
DELUX 100	0.75	1.0	1" X 1"	50	575-2625

FEATURES

- High Efficiency and energy Saving Design.
- Wide Voltage Range, High Suction Capacity.
- Fitted with Thermal Overload Protector (TOP).
- Superior Mechanical Seal for longer life.
- Anti-friction ball bearings, Forged Brass Impeller.
- Totally Enclosed Fan Cooled (TEFC) construction resists dust, moisture.
- Better Insulating Material, Easy Maintainable Design .
- Light Weight and Compact Design



WE KEEP IN **MOTION...**

Pai^ot[®]
MOTORS



Office :
Uttam Industrial Area,
Plot no 44, Lothada,
Rajkot-360024.

Contact Info
+91 73738 58590
info@pilotmotors.com

www.pilotmotors.com

